

# KARIBAN

**REFERENCE :** K572

**SIZES :** S M L XL XXL

**COMPOSITION :**

Main fabric : Cotton peach poplin 120 100%cotton

**WEIGHT :**

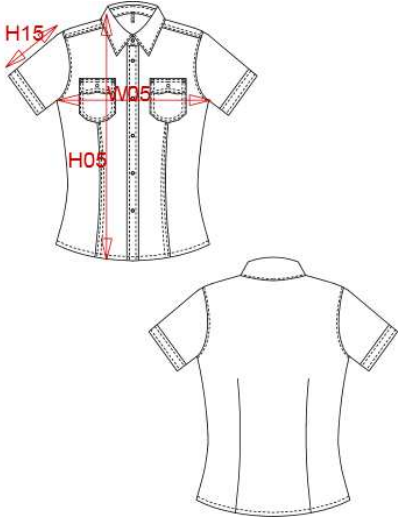
Main fabric : 120 gsm

**FABRIC CONSTRUCTION AND FINISHING :**

Garment washed

**ARTICLE WEIGHT :**

134 gr/pc



DESCRIPTION
<b>Français :</b> Chemise femme manches courtes cintrée
<b>English :</b> Short sleeves fitted shirt
<b>Nederlands :</b> Getailleerd dameshemd met korte mouwen
<b>Deutsch :</b> Tailliertedamen-kurzarmbluse
<b>Español :</b> Camisas de manga corta para mujer
<b>Italiano :</b> Camicia donna maniche corte taglio sagomato
<b>Português :</b> Camisa Tropical de senhora

COLORS	PANTONE SERIGRAPHIE
Black	Black
White	White
Navy	296C
Beige	7528C
Khaki	5743C

MEASUREMENT									
Description	Tol +/-	Tol +/- Taille max	S	M	L	XL	XXL		
<b>W05</b> 1/2 largeur poitrine / 1/2 chest width	2,0%	2,0%	49,50	51,50	53,50	56,50	59,50		
<b>H05</b> Hauteur totale / Total height			63,25	64,75	66,25	68,50	70,75		
<b>H15</b> Longueur manche / Sleeve length			19,50	20,50	21,50	22,75	24		

CARE LABEL				

PACKING	
Box	25 pcs / box S-XXL => L:52cm W:36cm H:20cm GW:6.50kg NW:5.50kg