

# KARIBAN

**REFERENCE :** K493

**SIZES :** XS\_S\_M\_L\_XL

**COMPOSITION :**

Main fabric : Peached French Terry Organic cotton / Polyester fleece 91/9 - 270 For solid color 91%cotton / 9%polyester

Main fabric : Peached French Terry Organic cotton / Polyester / Viscose fleece 87/9/4 - 270 For heather color 87%cotton / 9% polyester / 4%viscose

**WEIGHT :**

Main fabric : 270 gsm

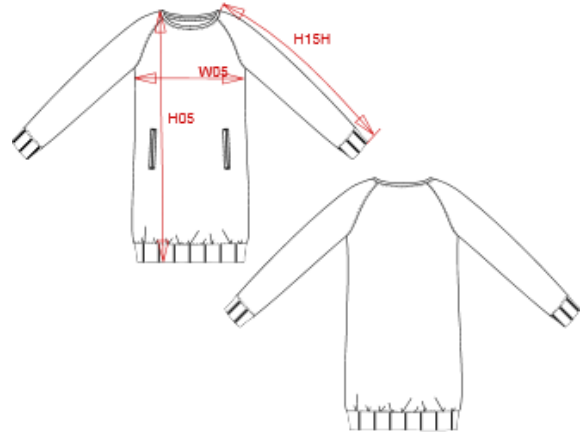
Main fabric : 270 gsm

**TECHNICAL DETAIL :**

OCS certified

**ARTICLE WEIGHT :**

442 gr/pc



DESCRIPTION
<b>Français :</b> Robe Lounge bio en molleton
<b>English :</b> Organic fleece lounge dress
<b>Nederlands :</b> Jurk Lounge bio in fleece
<b>Deutsch :</b> Bio-Loungekleid aus Fleece
<b>Español :</b> Vestido Lounge algodón orgánico de felpa
<b>Italiano :</b> Vestito Lounge bio in felpa
<b>Português :</b> Vestido Lounge Bio

COLORS	PANTONE SERIGRAPHIE
Light grey heather	Based on 877C
Navy	433C

MEASUREMENT						
Description	XS	S	M	L	XL	
<b>W05 (L)</b> 1/2 largeur poitrine à 1.5cm de l'emmanchure / 1/2 chest width at 1.5cm below armhole	47	50	53	56	59	
<b>H05 (L)</b> Hauteur totale / Total height	86	88	90	92	94	
<b>H15H</b> Longueur manche longue raglan avec bord côte / raglan long sleeve with rib	65	66,75	68,50	70,25	72	

CARE LABEL				

PACKING	
Box	15 pcs / box XS => L:60cm W:40cm H:18cm GW:7.50kg NW:5.90kg S => L:60cm W:40cm H:18cm GW:7.70kg NW:6.10kg M => L:60cm W:40cm H:18cm GW:8.00kg NW:6.40kg L => L:60cm W:40cm H:21cm GW:8.60kg NW:6.90kg XL => L:60cm W:40cm H:21cm GW:8.90kg NW:7.20kg