

KARIBAN

REFERENCE : K613

SIZES : S_M_L_XL_XXL_3XL_4XL_5XL

COMPOSITION :

Main fabric : Polyamide twill - 166 100% polyamide

Padding : Polyester polyfil - 150 For quilted body and sleeve lining 100%polyester

Padding : Polyester polyfil - 50 For inside front placket, pocket flaps and pipings 100%polyester

Lining 2 : Polyester taffeta 210T - 60 Inside quilted lining 100% polyester

WEIGHT :

Main fabric : 166 gsm

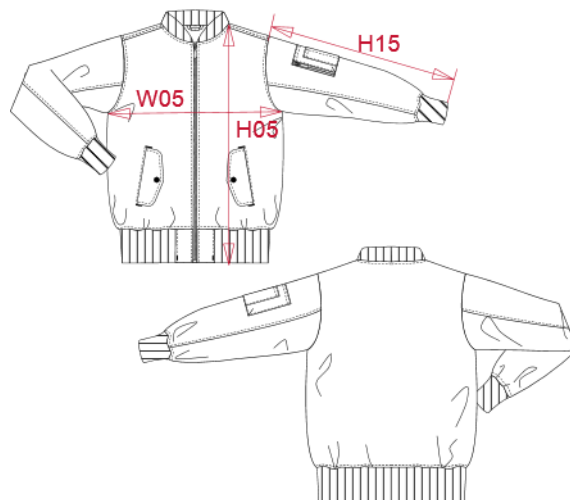
Padding : 150 gsm

Padding : 50 gsm

Lining 2 : 60 gsm

ARTICLE WEIGHT :

917 gr/pc



| DESCRIPTION |
|---|
| Français : Blouson bomber réversible |
| English : Reversible bomber jacket |
| Nederlands : Omkeerbaar bomberjack |
| Deutsch : Wende-Bomberjacke |
| Español : Cazadora Bomber reversible |
| Italiano : Giacca Bomber double face |
| Português : Blusão bomber reversível |

| COLORS | PANTONE SERIGRAPHIE |
|----------------|---------------------|
| Black / Orange | Black / 1585C |

| MEASUREMENT | | | | | | | | | | |
|--|----|-------|----|-------|-----|-------|-----|-------|--|--|
| Description | S | M | L | XL | XXL | 3XL | 4XL | 5XL | | |
| H05 (M) Hauteur totale / Total height | 69 | 71 | 73 | 75 | 77 | 79 | 81 | 83 | | |
| W05 (M) 1/2 largeur poitrine / 1/2 chest width | 57 | 60 | 63 | 66 | 69 | 72 | 75 | 78 | | |
| H15B (M) Longueur manche avec poignet / Sleeve length with cuff | 68 | 69,50 | 71 | 72,50 | 74 | 75,50 | 77 | 78,50 | | |

| CARE LABEL |
|------------|
| |

| PACKING | |
|---------|--|
| Box | 10 pcs / box S => L:60cm W:40cm H:42cm GW:10.6kg NW:8.7:kg M => L:60cm W:40cm H:42cm GW:11.1kg NW:9.2kg L => L:60cm W:40cm H:42cm GW:11.5kg NW9.6:kg XL => L:60cm W:40cm H:42cm GW:12.1kg NW:10.2kg XXL => L:60cm W:40cm H:42cm GW:12.4kg NW:10.5kg 3XL => L:60cm W:40cm H:42cm GW:12.8 kg NW:10.9kg 4XL => L:60cm W:40cm H:42cm GW:13.6kg NW:11.7kg 5XL => L:60cm W:40cm H:42cm GW:14kg NW:12.1kg |