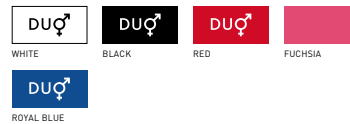


B&C Blondie Classic /women - TW 260

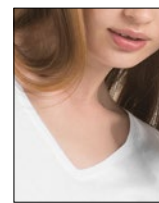


MEDIUM FIT

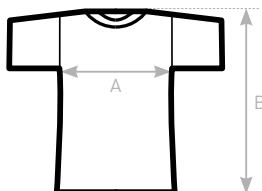
- Short-sleeved T-shirt
- Necktape
- Feminine V-Neck collar in self fabric
- Raglan sleeves
- Bottom and sleeve hems with double topstitching
- Side seams



- 100% pre-shrunk ring-spun **combed** cotton
- Single Jersey
- 120 g/m²
- XS - S - M - L - XL
- 5 pcs/pack & 25 pcs/carton



DUO
CONCEPT
with B&C Mick Classic /men



SIZES [CM]

B&C BLONDIE CLASSIC /W. TW 260	XS	S	M	L	XL	XXL	XXXL
A HALF CHEST	44,6	47,6	50,6	53,6	57,6	-	-
B BODY LENGTH FROM NECK POINT	64	65,1	66,2	67,3	69,5	-	-

