

KARIBAN

REFERENCE : K531

SIZES : S_M_L_XL_XXL_3XL

COMPOSITION :

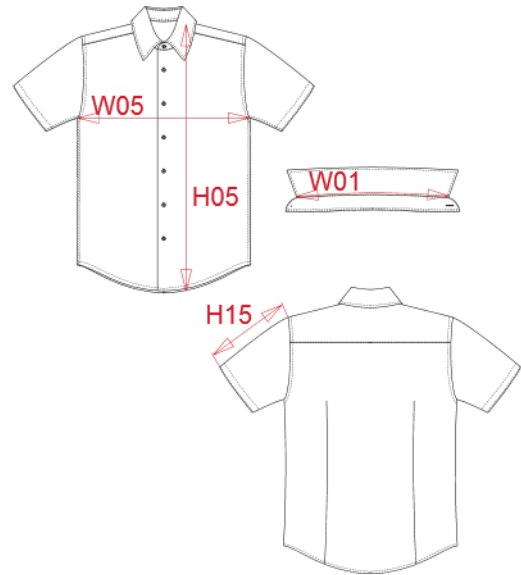
Main fabric : Cotton / Elastane poplin 97/3 - 120 97%cotton / 3%elastane

WEIGHT :

Main fabric : 120 gsm

ARTICLE WEIGHT :

290 gr/pc



| DESCRIPTION |
|---|
| Français : Chemise homme manches courtes |
| English : Men's short sleeve stretch shirt |
| Nederlands : Heren overhemd met korte mouwen |
| Deutsch : Pflegeleichtes herren kurzarm stretch-hemd |
| Español : Camisa de manga corta |
| Italiano : Camicia uomo maniche corte |
| Português : Camisa de manga curta em strech |

| COLORS | PANTONE SERIGRAPHIE |
|------------|------------------------|
| White | White |
| Black | Black |
| Zinc | 447C |
| Light blue | 544C |
| Navy | 433C |
| Wine | 504C |

| MEASUREMENT | | | | | | |
|---|-------|-------|-------|-------|-------|-------|
| Description | S | M | L | XL | 2XL | 3XL |
| W01 Longueur encolure / Neckline lenght | 40,50 | 41,75 | 43 | 44,25 | 45,50 | 46,75 |
| H05 Hauteur totale dos / Back total height | 76,50 | 78,50 | 80,50 | 82,50 | 84,50 | 86,50 |
| W05 1/2 largeur poitrine / 1/2 chest width | 51 | 54 | 57 | 60 | 63 | 66 |
| H15 Longueur manche / Sleeve length | 24 | 24,75 | 25,50 | 26,25 | 27 | 27,75 |

| CARE LABEL |
|------------|
| |

| PACKING | |
|---------|---|
| Box | 12 pcs / box S => L:60cm W:40cm H:19cm GW:5.32kg NW:3.62kg M => L:60cm W:40cm H:19cm GW:5.40kg NW:3.70kg L => L:60cm W:40cm H:19cm GW:5.50kg NW:3.80kg XL => L:60cm W:40cm H:19cm GW:5.60kg NW:3.90kg XXL => L:60cm W:40cm H:19cm GW:5.72kg NW:4.02kg 3XL => L:60cm W:40cm H:19cm GW:5.84kg NW:4.14kg |