

KARIBAN

REFERENCE : KV2300

SIZES : S_M_L_XL_XXL_3XL

COMPOSITION :

Main fabric : Cotton / Polyester fleece 290 80%cotton / 20%polyester

Fabric 2 : Cotton / Viscose Waffle 200 For inner hood lining 85%cotton/15%viscose

WEIGHT :

Main fabric : 280 - 290 gsm

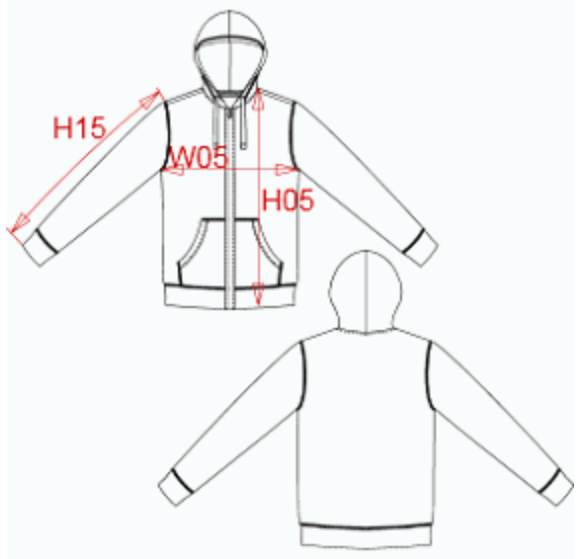
Fabric 2 : 200 - 210 gsm

FABRIC CONSTRUCTION AND FINISHING :

Gaugge 20gg Reactive dyed

ARTICLE WEIGHT :

720 gr/pc



DESCRIPTION	COLORS	PANTONE SERIGRAPHIE
Français : Sweat-shirt zippé homme à capuche	Vintage charcoal	446C
English : Men's zip hooded sweatshirt	Vintage navy	533C
Nederlands : Heren sweater met capuchon en rits	Vintage red	7427C
Deutsch : Herren full zip hooded sweat	Vintage blue	2144C
Español : Sudadera con capucha y cremallera	Vintage grey	7539C
Italiano : Felpa uomo cappuccio con zip	Vintage green	7730C
Português : Casaco sweatshirt com capuz		

MEASUREMENT								
Description	Tol +/-	Tol +/- Taille max	S	M	L	XL	2XL	3XL
H05 Hauteur totale avec BC / Total height with rib			71	73	75	77	79	81,75
W05 1/2 largeur poitrine / 1/2 chest width	3,0%	2,5%	51,50	54,50	57,50	60,50	63,50	67,50
H15 Longueur manche avec BC / Sleeve length with rib			65,50	67,50	69,50	71,50	73,50	75,50

CARE LABEL				

PACKING	
Box	20 pcs / box S => L:52cm W:40cm H:45cm GW:13.90kg NW:11.90kg M => L:52cm W:40cm H:48cm GW:14.50kg NW:12.50kg L => L:52cm W:40cm H:48cm GW:15.40kg NW:13.40kg XL => L:65cm W:40cm H:50cm GW:16.70kg NW:14.10kg XXL => L:65cm W:40cm H:50cm GW:17.60kg NW:15.00kg 3XL => L:65cm W:40cm H:50cm GW:18.40kg NW:15.80kg