

B&C DNM STARLIGHT /W. - WW D23



MEDIUM FIT

Women's slub sweatshirt with wide neckline

- Vintage look (Slub yarn)
- French Terry
- Wide neckline sweatshirt
- Long raglan sleeves
- Collar, cuffs and bottom hem in 1x1 rib
- Feminine cut
- Side seams



80% cotton - 20% polyester

French Terry | Cotton/polyester slub yarn

280 g/m²

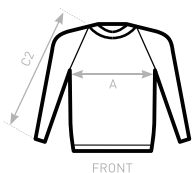
XS - S - M - L - XL

5 pcs/pack & 20 pcs/carton



**DUO♂
CONCEPT**

with B&C DNM Starlight /men



FRONT



BACK

SIZES [CM]

B&C DNM STARLIGHT / W. WW D23	XS	S	M	L	XL	XXL	XXXL
A HALF CHEST	42	45	48	51	54	-	-
B CENTER BACK LENGTH	53,5	55	56,5	58	59,5	-	-
C2 SLEEVE LENGTH (RAGLAN)	64	65,5	67	68,5	70	-	-

