

KARIBAN

REFERENCE : K453

SIZES : 6/8_8/10_10/12_12/14

COMPOSITION :

Main fabric : Brushed Combed Cotton / Polyester fleece 80/20 - 280 80%cotton / 20%polyester

Fabric 1 : Cotton single jersey (22/1) - 180 For hood lining, neckline property tape. 100%cotton

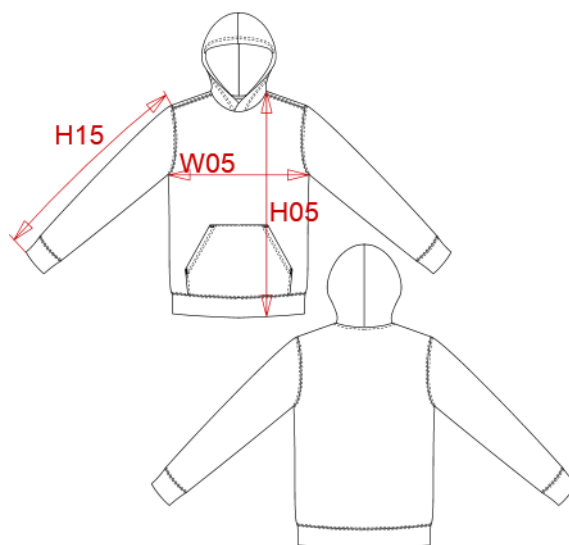
WEIGHT :

Main fabric : 280 gsm

Fabric 1 : 180 gsm

ARTICLE WEIGHT :

350 gr/pc



DESCRIPTION	
Français : Sweat-shirt capuche contrastée enfant	
English : Kids' contrast hooded sweatshirt	
Nederlands :	
Deutsch : BICOLOR KAPUZEN SWEATSHIRT FÜR KINDER	
Español : SUDADERA CON CAPUCHA CONTRASTADA PARA NIÑO	
Italiano : FELPA BAMBINO CON CAPPuccio IN CONTRASTO	
Português : Sweatshirt de criança com capuz em contraste	

COLORS	PANTONE SERIGRAFIE
Red / White	200C / White
Black / Red	Black / 200C
Light kelly green / White	7482C / White
White / Fine grey	White / 877C
Black / Yellow	Black / 1235C
Light royal blue / Yellow	653C / 1235C
Navy / Fine grey	433C / 877C
Oxford grey / Navy	Based on Cool gray 7C / 433C
Navy / Red	433C / 200C
Black / Fine grey	Black / 877C
Light royal blue / White	653C / White
Fuchsia / Fine grey	7425C / 877C
Sky blue / White	278C / White
Purple / Oxford grey	7447C / Based on Cool gray 7C

MEASUREMENT						
Description	6/8	8/10	10/12	12/14		
H05 Hauteur totale avec BC / Total height with rib	49,50	54,50	59,50	64,50		
W05 1/2 largeur poitrine / 1/2 chest width	39	42	45	48		
H15 Longueur manche avec BC / Sleeve length with rib	45,50	49,50	53,50	57,50		

CARE LABEL				

PACKING	
Box	20 pcs / box 6/8 => L:60cm W:40cm H:24cm GW:7.1kg NW:6kg 8/10 => L:60cm W:40cm H:24cm GW:7.8kg NW:6.6kg 10/12 => L:60cm W:40cm H:34cm GW:8.7kg NW:7.3kg 12/14 => L:60cm W:40cm H:34cm GW:9.4kg NW:8kg