

# PROACT.®

REFERENCE : PA330

SIZES : XS\_S\_M\_L\_XL\_XXL\_3XL\_4XL

**COMPOSITION :**

Main fabric : Nylon oxford PU coating - 120 100%polyamide  
 Main fabric : Nylon oxford PU coating - 120 For top contrasted yoke:

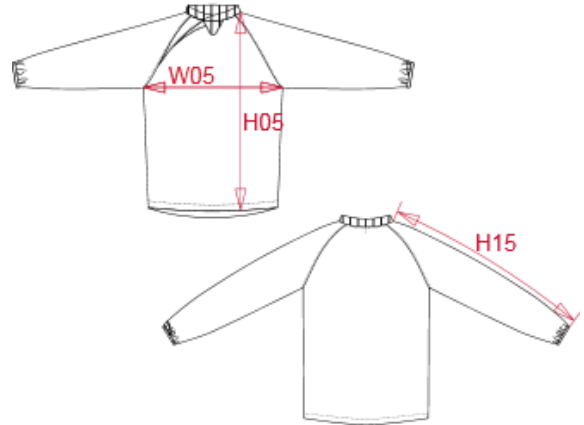
Main fabric : Nylon oxford PU coating - 120 For bottom contrasted yoke and left sleeve yoke. 100%polyamide

**WEIGHT :**

Main fabric : 120gsm  
 Main fabric : 120gsm  
 Main fabric : 120gsm

**ARTICLE WEIGHT :**

240gr/pc



DESCRIPTION	
<b>Français :</b> Sweat de pluie	
<b>English :</b> Rain sweat	
<b>Nederlands :</b> RAIN SWEATER	
<b>Deutsch :</b> REGEN-SWEATSHIRT	
<b>Español :</b> SUDADERA PARA LLUVIA	
<b>Italiano :</b> FELPA ANTIPIOGGIA	
<b>Português :</b> SWEAT PARA A CHUVA	

COLORS	PANTONE SERIGRAPHIE
Black / White / Storm grey	Black / White / 425C
Sporty navy / White / Storm grey	7546C / White / 425C

MEASUREMENT									
Description	XS	S	M	L	XL	XXL	3XL	4XL	
<b>H05</b> Hauteur totale devant / Front total height	73,50	75,50	77,50	79,50	81,50	83,50	85,50	88,30	
<b>W05</b> 1/2 largeur poitrine / 1/2 chest width	53	56	59	62	65	68	71	75	
<b>H15</b> Longueur manche / Sleeve length	76,50	79,30	82,10	85	87,90	90,80	93,60	96,80	

CARE LABEL				

PACKING	
Box	50 pcs / box All sizes => L:60cm W:40cm H:cm GW:kg NW:kg