



MEDIUM FIT

Hooded women's sweatshirt with side pockets

- Hooded sweatshirt
- Hood with drawstring made of darker tape & metallic eyelets
- Dark heather look
- Modern side pockets in double needle topstitch with jersey pocketing (no kangaroo)
- Cuffs and bottom hem in 1x1 rib
- Shoulders and armholes with flatlock topstitch
- Feminine cut
- Side seams



80% cotton - 20% polyester black

Brushed fleece inside | Cotton/polyester double dye melange

280 g/m²

XS - S - M - L - XL - XXL

5 pcs/pack & 20 pcs/carton

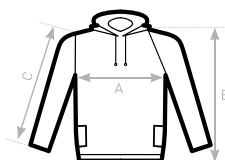


TIPS & IDEAS

- Side pocket construction (no kangaroo) allows for full print area down to bottom hem

**DU♂
CONCEPT**

with B&C DNM Universe /men



SIZES [CM]

B&C DNM UNIVERSE / W. WW D25	XS	S	M	L	XL	XXL	XXXL
A HALF CHEST	42	45	48	51	54	57	-
B CENTER BACK LENGTH	57	58,5	60	61,5	63	64,5	-
C SLEEVE LENGTH	58,5	60	61,5	63	64,5	66	-

