

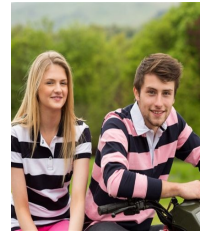
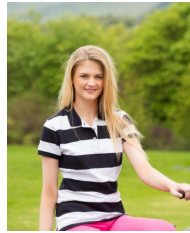


**FRONT ROW & CO**

**HERITAGE CLOTHING**

**LADIES STRIPE PIQUE POLO**

**FR211**



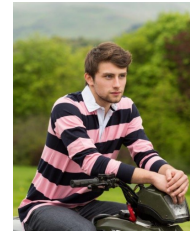
Matches with:



FR210



FR111



FR110

- Ladies Striped Pique Polo
- Engineered stripes
- Contrast tape detail in back neck and side vents
- Pearlised buttons with X stitch detail
- Flat knit collar
- 3 button placket
- Side vents with contrast trim
- Contrast trim in back neck
- Matches men's style FR210
- 200 gsm
- 100% Cotton
- XS-XXL

- 100% Cotton
- 200 gsm
- Wash at 40 degrees
- Wash Dark Colours Separately
- Wash and Dry Inside Out
- Re-shape While Damp
- Do Not Leave Folded When Damp
- Dry Out of Direct Heat and Sunlight
- Iron on Reverse

To Fit Sizes	XS	S	M	L	XL	XXL
Chest cms	76-81	81-87	87-91	91-96	96-101	107-112
Chest inches	30"-32"	32"-34"	34"-36"	36"-38"	38"-40"	42"-40"

Garment Measurements	XS	S	M	L	XL	XXL
Chest cms	43.0	45.0	47.5	50.0	52.5	56.0
length cms	63.5	65.5	67.0	68.5	69.5	70.0
sleeve length cms	14.5	15.0	15.5	16.0	16.5	17.0



NAVY/WHITE



NAVY/PINK