

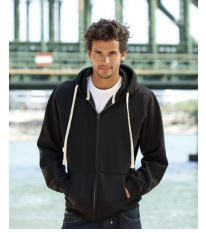


FRONT ROW & CO

HERITAGE CLOTHING

ZIP THROUGH HOODIE

FR800



Matches with:



FR801

FR600

- Zip Through Hoodie
- Coverstitch detail on seams
- Metal zip puller
- Rib detail on hood and kangaroo pocket opening
- Chunky functional contrast drawcord through hood
- Metal eyelets in hood
- Ribbed hem and cuffs
- Contrast tape at back neck
- Matches ladies FR801
- 80% Cotton / 20% Polyester
- 330 gsm Heavyweight Brushed Back Fleece
- XS-XXL

- 80% Cotton/20% Polyester
- 330 gsm Heavyweight Brushed Back Fleece
- Wash at 40 degrees
- Wash Dark Colours Separately
- Wash and Dry Inside Out
- Dry Out of Direct Heat and Sunlight
- Iron on Reverse

To Fit Sizes	XS	S	M	L	XL	XXL
Chest (cms)	85-91	91-96	96-101	107	112-117	122
Chest (inches)	34"-36"	36"-38"	38"-40"	42"	44"-46"	48"

Garment Measurements	XS	S	M	L	XL	XXL
Chest (cms)	52.0	55.0	57.5	60.0	62.5	65.0
Length (cms)	67.0	68.0	70.0	73.0	75.0	76.0
sleeve length (cms)	62.0	64.0	65.0	66.0	67.0	68.0



NAVY



HEATHER GREY



BLACK