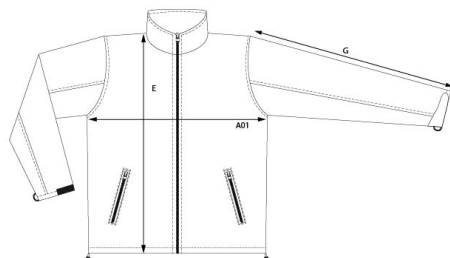


7820

Men's Softshell Jacket C⁺

measurement table (cm)

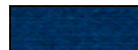
| | S | M | L | XL | XXL | XXXL | 4XL | 5XL |
|-----|----|----|----|----|-----|------|-----|-----|
| A01 | 54 | 57 | 60 | 63 | 66 | 69 | 74 | 79 |
| E | 68 | 70 | 72 | 74 | 76 | 78 | 80 | 82 |
| G | 65 | 66 | 67 | 68 | 69 | 70 | 71 | 72 |

A01 1/2 CHEST

E BODY LENGTH

G SLEEVE LENGTH

colours

9D/black
19-4205 TPX/TCXSG/steel gray
18-4005 TCXAQ/aqua
18-4330 TCX54/navy
19-4025 TPX/TCX

product description

Jacket, stand-up collar, zip with rain and chin protection, adjustable sleeve cuffs with velcro fastener, tunnel drawstring at hem with cord stoppers inside, 2 side pockets with zip, fixing for outer jacket, neutral size label, breathable, waterproof 8.000 mm, softshell bonded fleece bi-elastic, outer material: 95% polyester, 5% elastane, inner material: 100% Polyester, 310g/m². S-5XL.

Jacket concept 4 in 1, combinable with outer jacket 7548.

material

95 % polyester, 5 % elastane

weight

310 g/m²

sizes

S-5XL

care instructions



packaging units

Unit = 1 piece.

Carton = 10 pieces.

Sizes and weights + /- 5%. Subject to amendment.