

KARIBAN

REFERENCE : K6110

SIZES : S_M_L_XL_XXL_3XL_4XL

COMPOSITION :

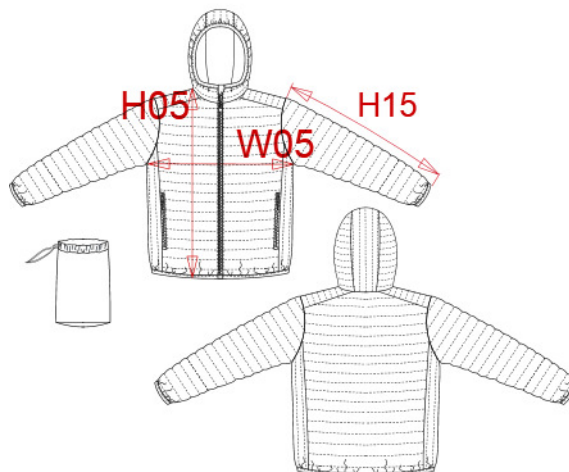
Main fabric : Polyamide 380T PA coating- 35 For Garment and packable bag 100%polyamide

Fabric : Polyester 380T PA coating - 45 For Garment and packable bag 100%polyester

Main fabric : Polyamide 380T PA coating- 35 For inside garment and pockets 100%polyamide

Wad 1 : Padding Polyester fake down (micro broken) - 260/270

Inside body,sleeve and hood 100%polyester



WEIGHT :

Main fabric : 35 gsm

Fabric : 45 gsm

Main fabric : 35 gsm

Wad 1 : 260/270 gsm

TECHNICAL DETAIL :

Coating for fake down proof

ARTICLE WEIGHT :

526 gr/pc

DESCRIPTION								COLORS	PANTONE SERIGRAPHIE
Français : Doudoune légère capuche homme								Black	Black
English : Men's lightweight hooded down jacket								Navy	433C
Nederlands : Lichte herenjas met capuchon								Light royal blue	653C
Deutsch : Leichte Herren-Steppjacke mit Kapuze								Red	200C
Español : Chaqueta acolchada ligera con capucha para hombre								Marl dark grey	Based on 446C
Italiano : Piumino uomo leggero con cappuccio								Marl silver	Based on 877C
Português : Blusão acolchoado leve com capuz								White	White
								Wine	504C
MEASUREMENT									
Description	S	M	L	XL	XXL	3XL	4XL		
H05 Hauteur totale terminée / Total height after sewing	70	72	74	76	78	80	82		
W05 1/2 largeur poitrine terminée/ 1/2 chest width after sewing	54	57	60	63	66	69	72		
H15 Longueur manche / Sleeve length	68,75	69,75	70,75	71,75	72,75	73,75	74,75		
CARE LABEL									
PACKING									
Box	15 pcs / box S => L:60cm W:40cm H:40cm GW:8.8kg NW:7.2kg M => L:60cm W:40cm H:40cm GW:9.2kg NW:7.7kg L => L:60cm W:40cm H:40cm GW:9.5kg NW:8 kg XL => L:60cm W:40cm H:40cm GW:9.9kg NW:8.6kg XXL => L:60cm W:40cm H:42cm GW:10.5kg NW:8.7kg 3XL => L:60cm W:40cm H:42cm GW:10.9kg NW:8.9kg 4XL => L:60cm W:40cm H:42cm GW:11.2kg NW:9.3kg								