

# PROACT.®

REFERENCE : PA343

SIZES : XS\_S\_M\_L\_XL\_XXL

**COMPOSITION :**

Main fabric : Polyester diamond cool dry -100 Main fabric for body, sleeve vest, big pocket sacks, front & back facing & neckline loop. 100%polyester

Lining 1 : Mesh 65 Inner body of vest & small pocket sack vest. 100%polyester

Lining : Polyester taffeta 190T - 60 For inner sleeve of vest 100%polyester

**WEIGHT :**

Main fabric : 100 gsm

Lining 1 : 65 gsm

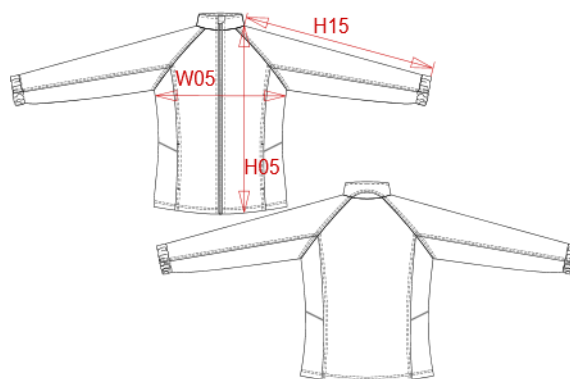
Lining : 60 gsm

**TECHNICAL DETAIL :**

Quick dry fabri

**ARTICLE WEIGHT :**

295 gr/pc



| DESCRIPTION  |
|--|
| <b>Français :</b> Veste de survêtement femme           |
| <b>English :</b> Ladies' track top                     |
| <b>Nederlands :</b> Dames trainingsjas                 |
| <b>Deutsch :</b> DAMEN TRAININGSJACKE                  |
| <b>Español :</b> Chaqueta de chándal para mujer        |
| <b>Italiano :</b> GIUBBOTTO DONNA                      |
| <b>Português :</b> Casaco de fato de treino de senhora |

| COLORS | PANTONE SERIGRAPHIE |
|--------|---------------------|
| Black  | Black               |
| Navy   | 433C                |
| White  | White               |

| MEASUREMENT   |       |       |       |       |       |       |  |
|---|-------|-------|-------|-------|-------|-------|--|
| Description   | XS    | S     | M     | L     | XL    | XXL   |  |
| <b>H05 (L)</b> Hauteur totale / Total height                | 68,30 | 69,80 | 71,30 | 72,80 | 74,30 | 76,50 |  |
| <b>W05 (L)</b> 1/2 largeur poitrine / 1/2 chest width       | 48    | 50    | 52    | 54    | 56    | 59    |  |
| <b>H15L (L)</b> Longueur manche longue / Long sleeve length | 73    | 75    | 77    | 79    | 81    | 83    |  |

| CARE LABEL |
|------------|
|            |

| PACKING |   |
|---------|---|
| Box     | 30 pcs / box<br>All sizes => L:60cm W:40cm H:13cm GW:4.50kg NW:3.50kg |